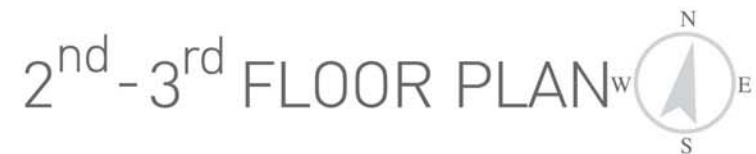


2nd FLOOR PLAN



3rd FLOOR PLAN



Project : Click Condo 65 Condominium
 Project & Owner : Dalvey Estate Co., Ltd.
 Location : 101 Click Condo 65 Soi Sukhumvit 65
 Prakanong-Nuea Wattana Bangkok 10110
 Title Deed No. 1192 and 1193
 Total Land Area : 1-0-37 Rai License No. 272/2552
 Completion : December 2009
 Tel : +66 (0) 2808 4588
 Hotline : +66 (0) 83 300 8600 , +66 (0) 83 300 8700
 Email : info@dalveythai.com



4th-7th FLOOR PLAN



8th FLOOR PLAN

4th-8th FLOOR PLAN



Project : Click Condo 65 Condominium
 Project & Owner : Dalvey Estate Co., Ltd.
 Location : 101 Click Condo 65 Soi Sukhumvit 65
 Prakanong-Nuea Wattana Bangkok 10110
 Title Deed No.1192 and 1193
 Total Land Area : 1-0-37 Rai License No.272/2552
 Completion : December 2009
 Tel : +66 (0) 2808 4588
 Hotline : +66 (0)83 300 8600 , +66 (0)83 300 8700
 Email : info@dalveythai.com

The developers reserves the right to change without prior notice